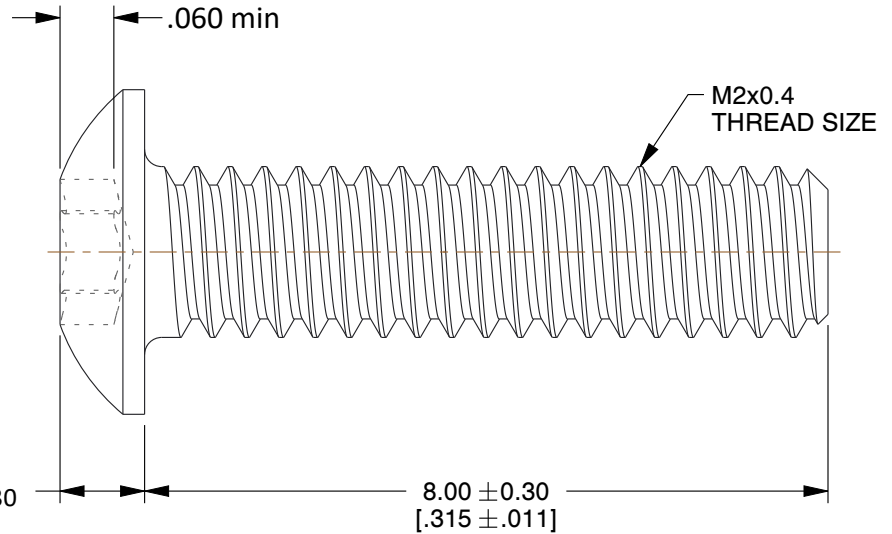
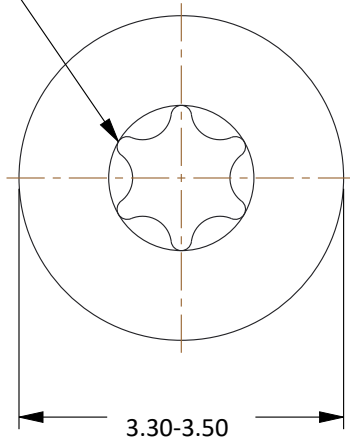


T6 TORX DRIVE



NOTES:

- 1. HEAD TYPE : Button
- 2. DRIVE TYPE : Torx Socket
- 3. MATERIAL : Stainless Steel
- 4. FINISH : Plain
- 5. THREAD TYPE : Metric Coarse
- 6. MEETS: ISO 7380-1
- 7. RoHS : Compliant

COMPONENT	Socket Screws
.2C8BHXS	UNIT
M2-4 X 8 BUT HD 6-LOBE/TORX ISO7380-1 A2 STAINLESS	MM [IN]
	SHEET
	1 of 1



www.olander.com

This file and any associated information and specifications are provided for reference and evaluation purposes only, and is subject to change without notice. Olander makes no representations, warranties or guarantees as to the appropriateness, accuracy, completeness, or suitability for any purpose, of the file, information or specifications. You are solely responsible for the use of the file, information or specifications.

This drawing is the property of OLANDER. It contains confidential, proprietary information that is OLANDER property. Do not disclose to or duplicate for others except as authorized by OLANDER.